



RECP #: 752657

RECORDED 5/8/2019 AT 1:11 PM BK# 2620 PG# 1699
Debra K. Lee, CLERK OF LARAMIE COUNTY, WY PAGE 1 OF 1

STATE OF WYOMING CORNER RECORD

(In compliance with the CORNER PERPETUATION AND FILING ACT, Wyoming Statutes, 1997 Section 33-29-140, et. seq., and the Rules and Regulations of the Board of Registrations for Professional Engineers and Professional Land Surveyors)

NORTHEAST CORNER SECTION 6, T. 17 N., R. 63 W., 6TH P.M., LARAMIE COUNTY, WYOMING

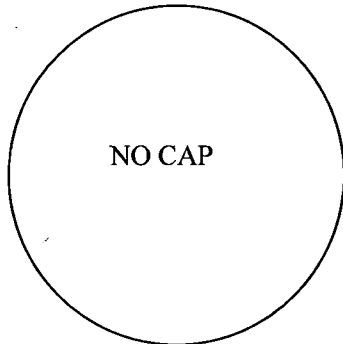
GLO: SET A SANDSTONE 17X12X5, 11 IN. DEEP, WITH ONE MARK ON WEST AND 5 ON EAST EDGES FOR CORNER TO SECTIONS 5, 6, 31, AND 32.

FOUND: REBAR WITH NO CAP. FOUND REBAR + - 1' ON WEST SIDE OF NORTH/SOUTH/EAST FENCE CORNER.

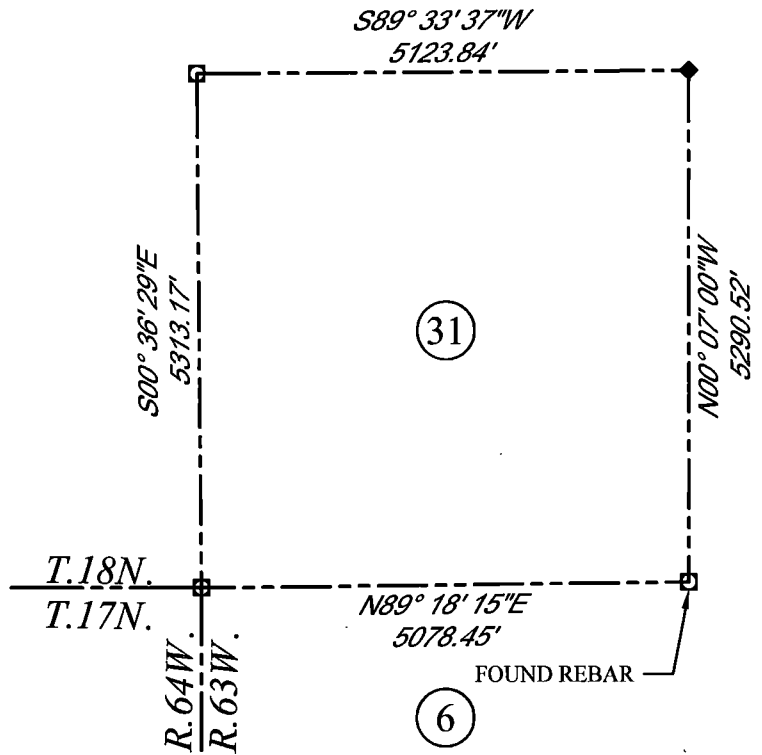


SCALE: NONE
NORTH DETERMINED BY
G.P.S OBSERVATIONS

FOUND: REBAR, NO CAP



DATE OF FIELD WORK: 8/22/2018 OFFICE REFERENCE: MERIDEN



LEGEND:

- FOUND BLM CAP
- FOUND USFS CAP
- FOUND STONE
- FOUND PRIVATE MONUMENT
- ▲ CALCULATED POSITION
- ▲ SET MONUMENT (LS10245)
- SECTION LINE

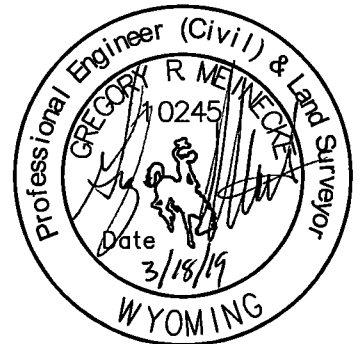
CROSS INDEX DIAGRAM

	1	2	3	4	5	6	7	8	9	10	11	12	13	14	15	16	17	18	19	20	21	22	23	24	25
A																									
B																									
C			6			5			4				3					2							1
D																									
E																									
F																									
G			7			8			9				10					11							12
H																									
J																									
K																									
L			18			17			16				15					14							13
M																									
N																									
O																									
P			19			20			21				22					23							24
Q																									
R																									
S																									
T			30			29			28				27					26							25
U																									
V																									
W																									
X			31			32			33				34					35							36
Y																									
Z																									
	1	2	3	4	5	6	7	8	9	10	11	12	13	14	15	16	17	18	19	20	21	22	23	24	25

WOOD
2615 AVIATION DRIVE
SHERIDAN, WY 82801
PH: 307-675-6400



THIS CORNER RECORD WAS
PREPARED BY ME OR UNDER
MY DIRECTION AND
SUPERVISION,
SEAL AND SIGNATURE



CORNER NAME: NORTHEAST SECTION: 6 T. 17 N., R. 63 W. ; 6TH P.M. CROSS-INDEX # A-5
SBRPELS/PLSW: MARCH 1994; PLSW JANUARY 1998